

The sky is yours.

إفْتَلِك السَّحَاب

Our Story

urbnlanes

DEVELOPMENTS

A MEMBER OF



A real state developing company and a proud member of Emeel Abdalla Investments and therefore it is a company built on a wide array and several years of experiences.

Specialized in meeting expectations and executing projects that are both functional and aesthetic. Their core value is delivering projects with the highest quality in a timely manner that is always satisfactory and practical to the people using the spaces.

Mission:

Is to deliver a feeling through our buildings; a positive energy that makes a difference with people in the space they inhabit whether they are residential, commercial or office spaces.

Vision:

Is build on setting a new benchmark in the field of real estate development in Egypt. We aim to inspire the world through buildings that not only reflect technicality but also mirror and go back to our community.

Values:

We aim at contributing to community development by both directing the real estate development field towards a more quality over quantity mindset and creating spaces that help people in living better lives.



More than 36 years experience in building high rises.

From Kuwait to Egypt.



Rashdan Tower | KUWAIT-2018



American University | KUWAIT-2018



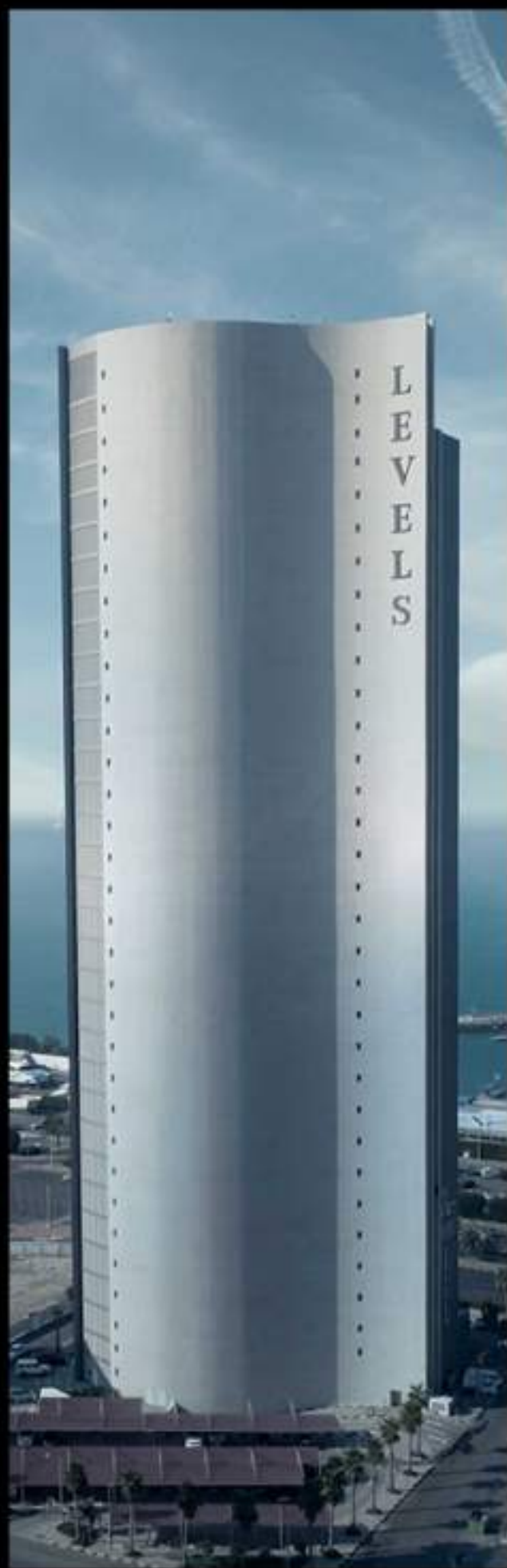
Abdullah Mubarak | KUWAIT-2017



YJM Medical center Tower | KUWAIT-2019



Panasonic Tower | KUWAIT-2019



Levels Tower | KUWAIT-2021

Architecture

Elite
Luxurious
Design



Mr. Mohamed Hafez
C.E.O. Hafez Consultant



Mr. Francesco Anzolin
Architect

Urbanians takes pride in developing long-term plans and implementing strategies that will help achieving goals of our tenants. The tower is a representation for innovation, utilizing a luxurious life style and the latest trends of corporate spaces.

The design incorporates natural abstract elements into the heart and soul of the building as every few levels are divided into themed, named zones. Starting with Levels Mall, the white edition interior design for the commercial area. Followed by Selena, the grey edition interior for office spaces. Then comes Sol with a black edition interior design for the admin spaces. Last but not least Arura, the colorful interior design for the sky lounge, admin offices and hotel apartments.





levels

Arura
Northern Light
Sky Lounge
Admin Offices
& Hotel
Apartments
Floor 26 to 36

Sol
Sun in Latin
Admin Spaces
Floor 16 to 25

Selene
Moon in Greek
Office Spaces
Floor 3 to 16

Levels Mall
Commercial Area
Floor 1 to 3
5 floors Underground
parking & storage

The project consists of 36 floors,
5 floors underground for parking & storage.



Levels Mall

White-edified Interior

Commercial Area

Floor 1 to 3

5 floors underground parking & storage



Selene

Moon in Greek

Grey-edified Interior

Office Spaces

Floor 3 to 16



Sol

Sun in Latin

Black edition interior

Admin Spaces

Floor 16 to 25



Arura

Northern Light

Colorful edition interior

Sky Lounge

Admin Offices

& Hotel Apartments

Floor 26 to 36







Levels[®] Business Tower

The northern axis of Bin Zayed.
The first row of the Downtown towers.
The new administrative capital.

Neighborhood

The New Administrative Capital

is set to become a new center of excellence for living in Egypt and beyond. It will feature a fully-integrated capital with world-class residential, commercial, medical, financial, and educational institutions. Moreover, an independent international airport, a modern train station that is connected to Egypt's railway system and it will use the most advanced technology to provide the first central security system. It is expected to attract 40 million people upon completion.

Levels is located at the first row of the Downtown towers, the new administrative capital, and on the northern axis of Bin Zayed and the Green River. with an open view of the Green River.

4 minutes away from the government district and Misr Mosque.

3 minutes away from Al Masa Hotel.

The only land in the tourist towers that has a pedestrian bridge passing by Green River to Down Town.



Facilities & Services

Lay back
and recuperate.



VIP lounge
Cigar lounge
Espresso lounge
Meeting rooms



Facilities & Services

Tilted floor
Glass room
Glass bridge



Facilities & Services

- Mall
- Retail
- E zone
- Anchor stores
- Food Court



Facilities & Services

- Spa
- Fountains
- Fountain statue
- Hotel



Floor Plans

Disclaimer: Drawings are not to scale and the dimensions are approximate. Al-Dawla reserves the right to change in the master plan, all drawing dimensions, Areas and Materials without notification.

-Any colored images shown are indicative only, actual colors may vary.
-Floor plans may be mirrored depending on location on master plan.
-In the case of garden leveloption, stair and terrace details may vary.

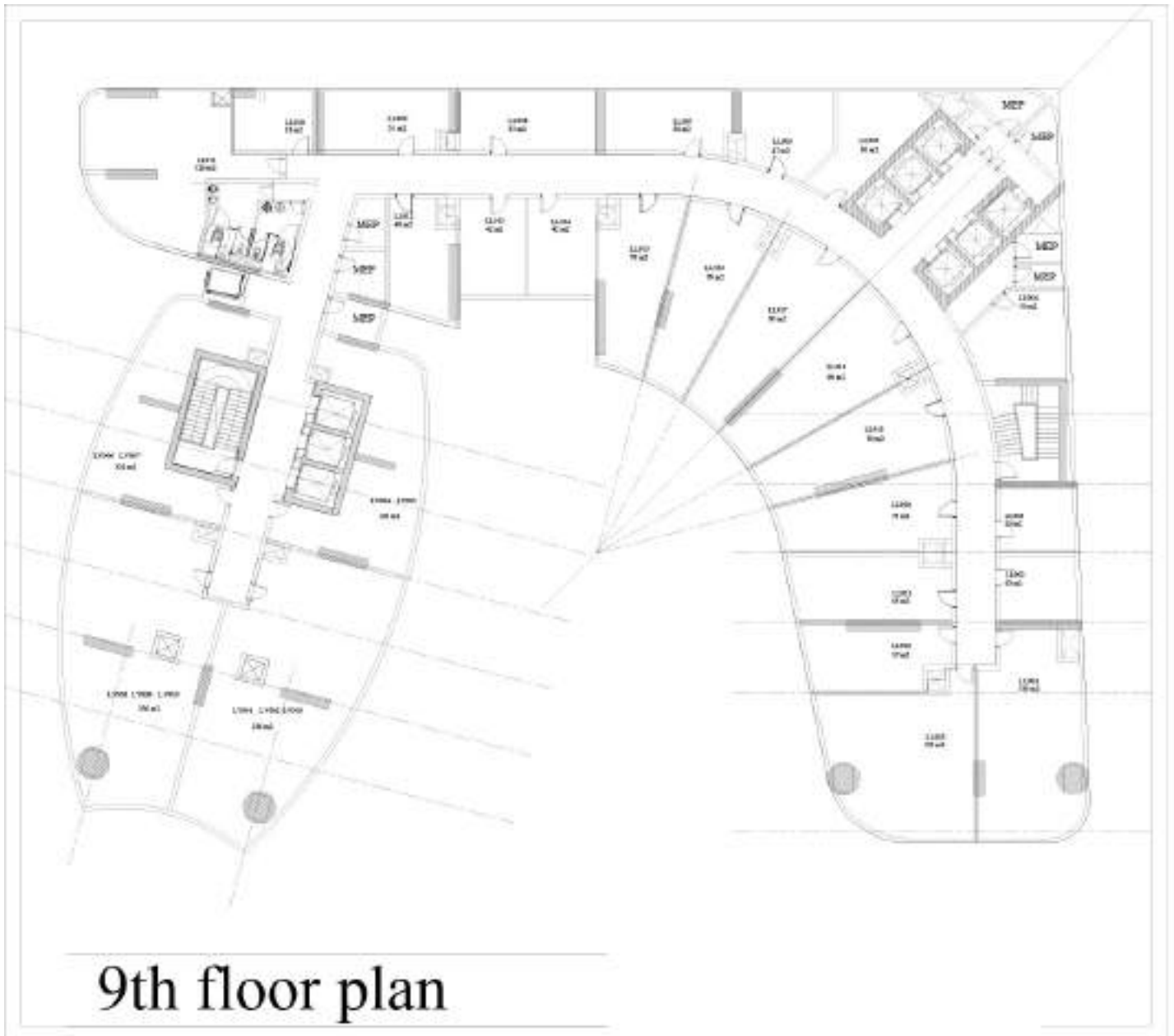




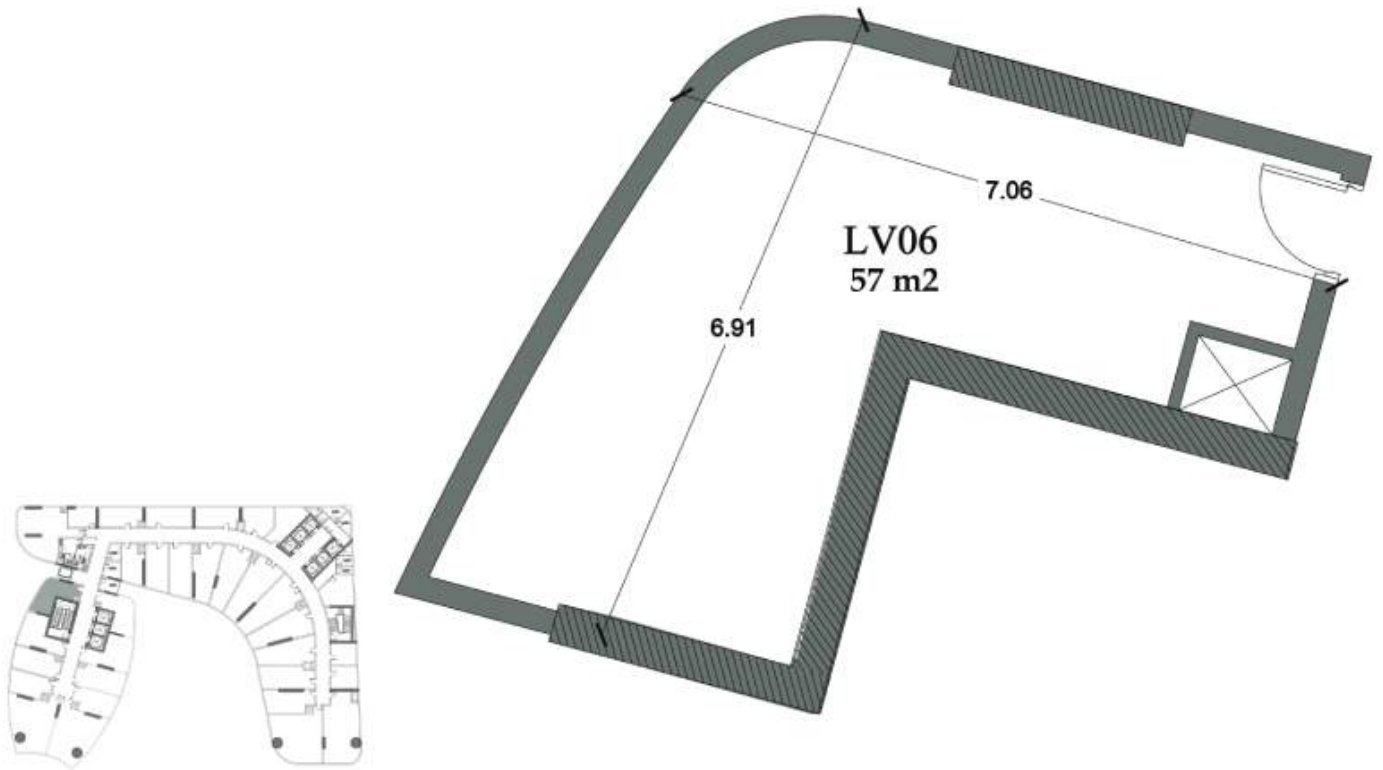
9th floor plan



Floor Plan



9th floor plan



All drawings shall be and remain private property of Hafez Consultants - Egypt. Hafez Consultants. All rights reserved. No part of these drawings may be reproduced, modified or otherwise used, in whole or in part, without the written permission of Hafez Consultants.



HAFEZ CONSULTANTS
MOHAMED ESSAM HAFEZ
ARCHITECTS, PLANNERS, INTERIOR DESIGNERS

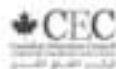
بيان تفصيلي باقساط الثمن والمستحقات الوالية

Payment Terms	Levels - 10% - 6 years - Q
Project Name	Business Levels Tower
Unit No	LV906
Unit Original Price	5,336,910
Final Price	5,336,910

Payment Name	Due Percent	Due Amount	Due Date
Downpayment	10 %	533,691	08-Jan-2024
Installment 1	3.75 %	200,134	08-Apr-2024
Installment 2	3.75 %	200,134	08-Jul-2024
Installment 3	3.75 %	200,134	08-Oct-2024
Installment 4	3.75 %	200,134	08-Jan-2025
Installment 5	3.75 %	200,134	08-Apr-2025
Installment 6	3.75 %	200,134	08-Jul-2025
Installment 7	3.75 %	200,134	08-Oct-2025
Installment 8	3.75 %	200,134	08-Jan-2026
Installment 9	3.75 %	200,134	08-Apr-2026
Installment 10	3.75 %	200,134	08-Jul-2026
Installment 11	3.75 %	200,134	08-Oct-2026
Installment 12	3.75 %	200,134	08-Jan-2027
Installment 13	3.75 %	200,134	08-Apr-2027
Installment 14	3.75 %	200,134	08-Jul-2027
Installment 15	3.75 %	200,134	08-Oct-2027
Installment 16	3.75 %	200,134	08-Jan-2028
Installment 17	3.75 %	200,134	08-Apr-2028
Installment 18	3.75 %	200,134	08-Jul-2028
Installment 19	3.75 %	200,134	08-Oct-2028
Installment 20	3.75 %	200,134	08-Jan-2029
Installment 21	3.75 %	200,134	08-Apr-2029
Installment 22	3.75 %	200,134	08-Jul-2029
Installment 23	3.75 %	200,134	08-Oct-2029
Installment 24	3.75 %	200,137	08-Jan-2030

Total Amount	100 %	5,336,910	
Maintenance		533,691	08-Jul-2027
Total Price With Maintenance		5,870,601	

Partners of success..



urbnlanes
DEVELOPMENTS

A MEMBER OF



BI Ground floor, Mivida
Business Park, Emaar,
New Cairo, Egypt.

urbnlanes-dev.com

